

PREMATECNICA

Equipos e instalaciones para las industrias de proceso y energía

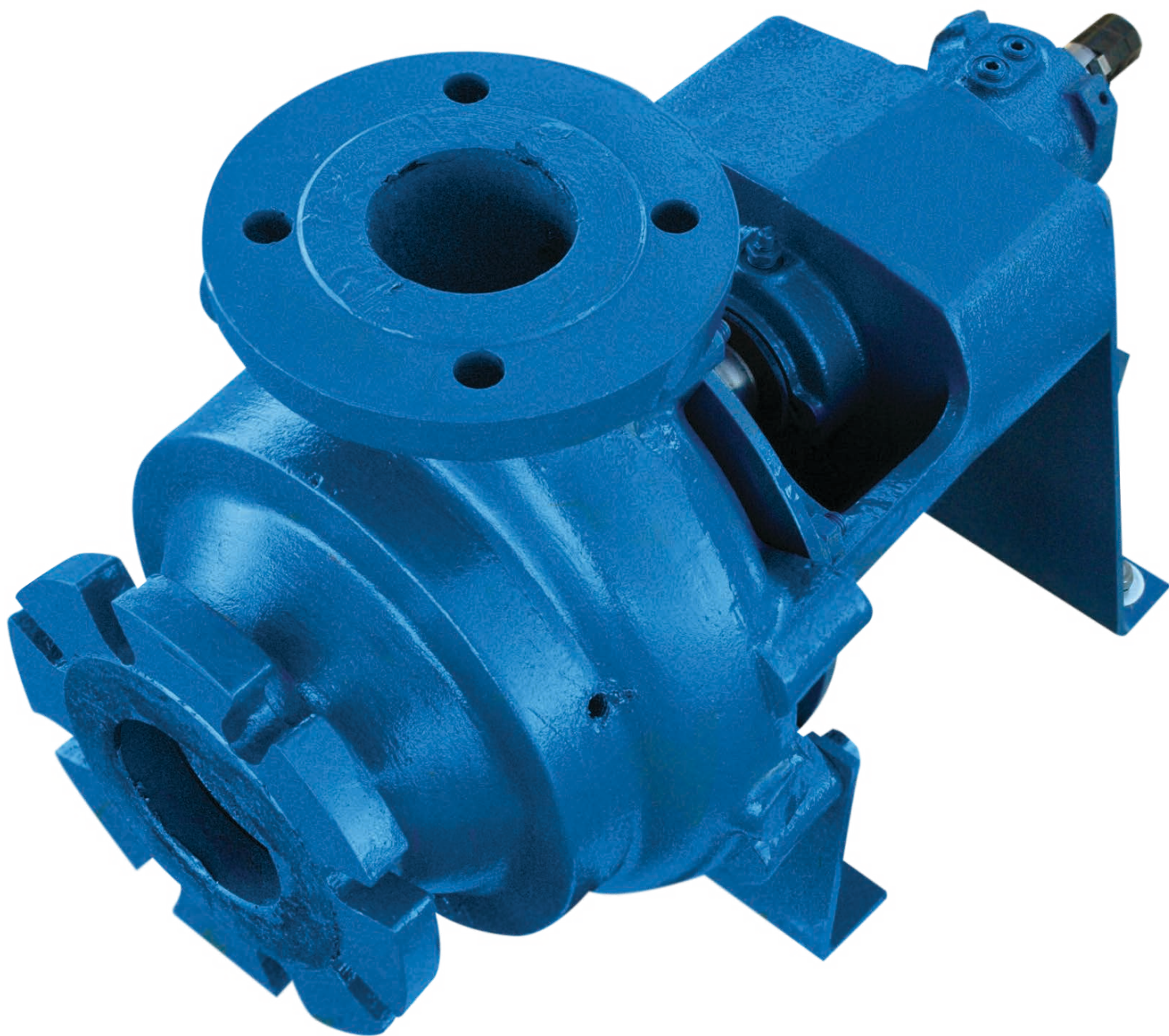


WEIR

Minerals

WARMAN® Screw Flow Pump

WSF® Pump



Weir Minerals are specialists in delivering and supporting sludge and slurry equipment solutions including pumps, hydrocyclones, valves and wear resistant linings for the global power, mining, petrochemical and general industrial markets, including pharmaceuticals & food processing.

The Warman® screw flow pump is equipped with a classic single vane screw centrifugal impeller. The long-established screw centrifugal design provides clog-resistant pumping for trouble free movement of solids, and fibrous and stringy materials. The steep head-capacity curve produced by the impeller provides additional head to help push through any partial blockages.



Low specific speed impeller

Configurations

- Horizontal
- Vertical
- Submersible
- Prerotation

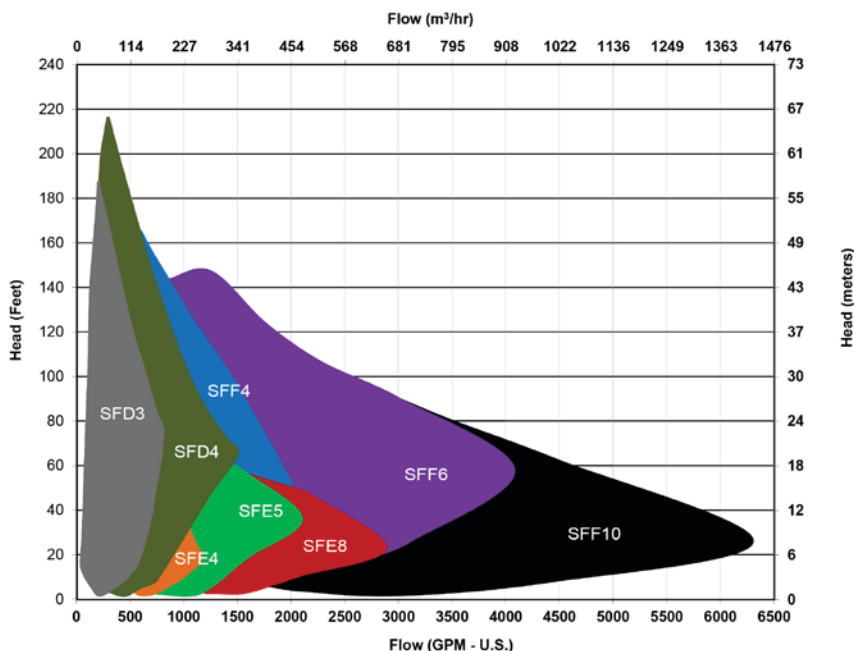
Features:

- High efficiency
- Low NPSH requirements
- Steep head-capacity curve
- Flushless tandem mechanical seals
- Adjustable liners
- Large solids passage
- Solids passage: 2.5 - 4.75 in 63mm - 120mm
- High Chrome Iron impeller & liner ASTM A532 Class III Type A

Applications:

- Sludges
- Raw & unscreened sewage
- Paper stock & wood chips
- Wet well cleanup
- Crystalline compounds
- Bacterial Floc
- Easily damaged fruits & vegetables
- Coal

Performance Curves



Low NPSH:

The screw portion of the Warman® screw flow pump impeller performs as an inducer, pulling liquid into the impeller, resulting in low NPSH requirements.

Solids Handling:

The single vane impeller of the Warman® screw flow pump creates a single channel flow, allowing for larger solids passage. The large solids passage provides better solids handling capabilities than any other pump type. The steep head-capacity curve provides ample reserve pressure to clear temporary clogs.

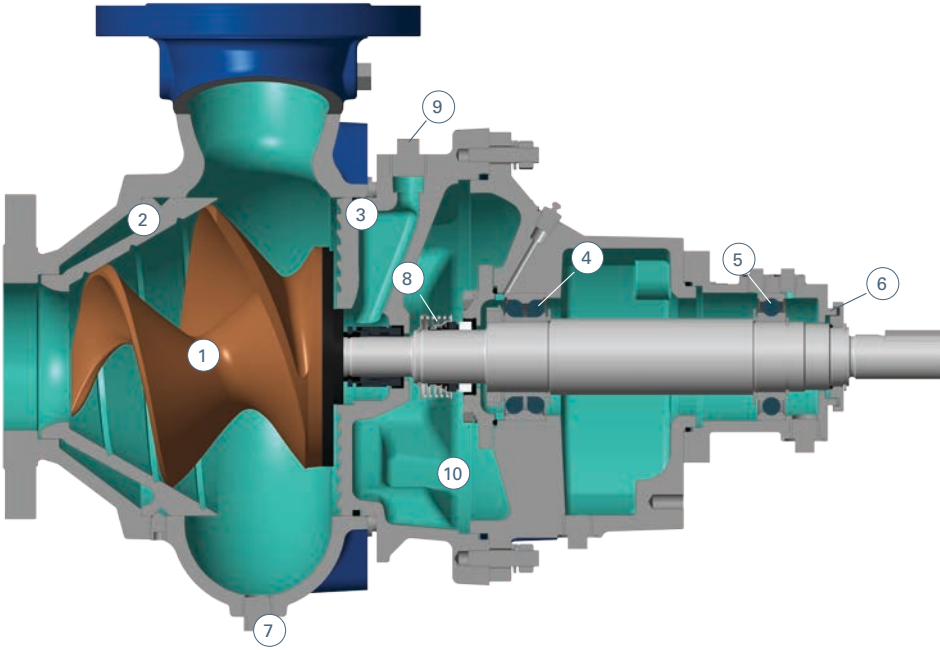
Sludge Handling | Positive Suction:

The combination of a low NPSH requirement and large solids channels provides a powerful pump for handling thick sludges. The steep head-capacity curve of the Warman® screw flow pump also allows for pumping of varying sludge consistencies without the need to change speed. An additional benefit is the reserved head for clearing temporary line blockages.

Adjustable Liner:

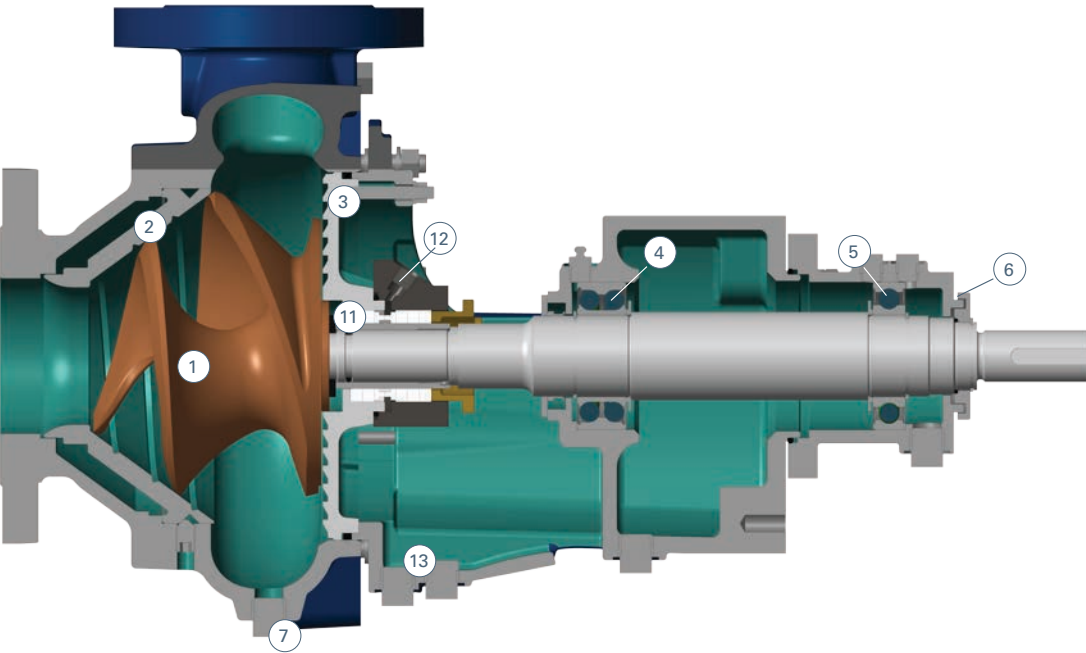
Consistent impeller to liner clearance is imperative to the performance of the pump. As the pump components wear, clearance between the impeller and liner can be adjusted to ensure optimal performance.

Warman® WFS Pump with tandem seal arrangement (BFDOW)



1. HCl screw centrifugal impeller
2. Adjustable, hci, grooved liner
3. Pump-out grooves
4. Thrust bearings
5. Radial bearings
6. Labyrinth bearing seal
7. Case vent & drain
8. Flushless tandem mechanical seals
9. Optional impeller flush port
10. Oil bath
11. Packing (mechanical seals optional)
12. Flush port
13. Scupper drain

Warman® WSF Pump with stuffing box arrangement (BFDOS)





Av. Fuente de la Mora, 2 - 28050 MADRID - España - Tel. (+34) 915 57 05 00*

PREMATECNICA

Equipos e instalaciones para las industrias de proceso y energía



Minerals

Weir Minerals Europe Ltd

Head Office
Halifax Road
Todmorden
Lancashire OL14 5RT
United Kingdom

Tel: + 44 1706 814 251
Fax: + 44 1706 815 350
UK.minerals@mail.weir

www.global.weir

